



#MoodHanaPattern

## “The Hana Dress”

Ladies Sizes 00 to 32

Formatted for both  
US Letter & A4 Paper

**Trimless Option:** This is the fastest! No trimming needed! Place left-side margins over right-side margins, overlapping dashed lines and dots. In the same fashion, top margins will overlap bottom margins. Slight unprinted gaps are normal for this method.

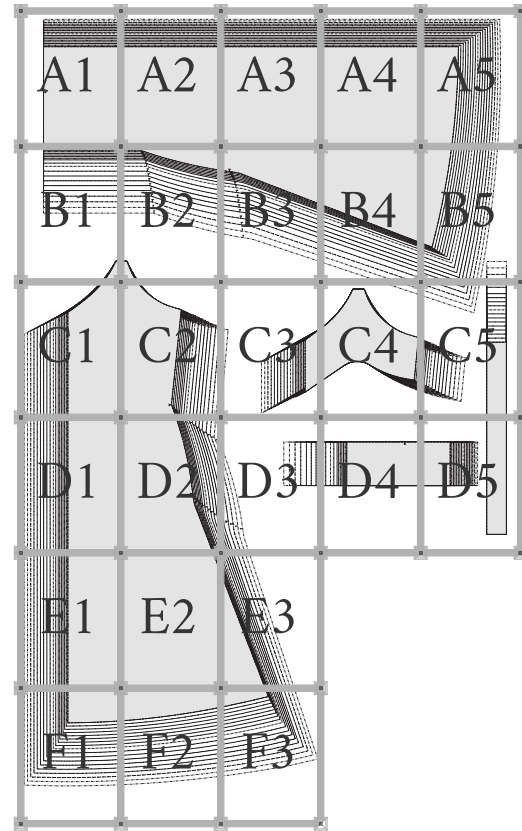
**Trimmed Option:** This removes any unprinted gaps. Trim along the top and right margins at the dashed lines. Overlap the trimmed margins to the untrimmed margins, matching dashed lines and dots.

**Tip!** Build rows first, then join the rows together as you go.

©2022 MoodFabrics.com / MoodSewciety.com  
Mass production, resale, or distribution of this pattern in any form is strictly prohibited.

**STOP!**

Print only this page first to check accuracy.  
The Mood square to the left should measure 2 inches.  
Print “actual size” in “portrait” mode (not auto center).  
Formatted for both US Letter & A4 paper sizes.



<b>A</b>	A - STRAP FABRIC: CUT 2
<b>B</b>	B - FRONT FACING FABRIC: CUT 1 ON FOLD
<b>C</b>	C - FRONT FABRIC: CUT 1 ON FOLD
<b>D</b>	D - BACK FACING FABRIC: CUT 1 ON FOLD
<b>E</b>	E - BACK FABRIC: CUT 1 ON FOLD



# “The Hana Dress”

#MoodHanaPattern

Ladies Sizes 00 to 32

## BODY MEASUREMENTS IN INCHES

SINGLE SIZES	00	0	2	4	6	8	10	12	14	16	18	20	22	24	26	28	30	32
BUST	31	32	33	34	35	36	37.5	39	40.5	42.5	44.5	46.5	48.5	50.5	52.75	55	57.25	59.5
WAIST	23	24	25	26	27	28	29.5	31	32.5	34.5	36.5	38.5	40.5	42.5	44.75	47	49.25	51.5
HIP	34	35	36	37	38	39	40.5	42	43.5	45.5	47.5	49.5	51.5	53.5	56	58.5	61	63.5

## APPROXIMATE FINISHED GARMENT MEASUREMENTS - IN INCHES

SINGLE SIZES	00	0	2	4	6	8	10	12	14	16	18	20	22	24	26	28	30	32
BUST	31	32	33	34	35	36	37.5	39	40.5	42.5	44.5	46.5	48.5	50.5	52.75	55	57.25	59.5
WAIST	29.25	30.25	31.25	32.25	33.25	34.25	35.75	37.25	38.75	40.75	42.75	44.75	46.75	48.75	51	53.25	55.5	57.75
HIP	36.1	37.1	38.1	39.1	40.1	41.1	42.6	44.1	45.6	47.6	49.6	51.6	53.6	55.6	58.1	60.6	63.1	65.6

Drafted for drapery, woven fabrics to cut on the bias, or stretch fabrics to cut on the straight grain. Size guide is based on the suggested design & wearing ease for this style. You can also choose your size according to your desired finished garment measurements and personal fit preferences. Blend between sizes as needed. For best results, sew a test garment to adjust your pattern as needed.

We love creating these free patterns for the community and we want to keep them free! In return, we hope you check out MoodFabrics.com for your next project!

Want to use one of our patterns to make a garment to sell? Our patterns are royalty-free! We just ask that you credit us with MoodSewciety.com or MoodFabrics.com in your product description.

♥ The Mood Sewciety Team

FOR SEWING INSTRUCTIONS:

Scan the QR code or visit  
MoodSewciety.com and search  
“MDF316”



1/2" seam allowances (SA's) included  
unless stated otherwise.

©2022 MoodFabrics.com / MoodSewciety.com  
Mass production, resale, or distribution of this  
pattern in any form is strictly prohibited.

HA

3/8" SA

STRAP  
PLACEMENT

PATTERNS  
BY *Mood*  
DESIGNER FABRICS  
MDF316

#MoodHanaPattern

“The Hana Dress”

SIDE SEAM 1/2" SA

# "The Hana Dress"

MDF316

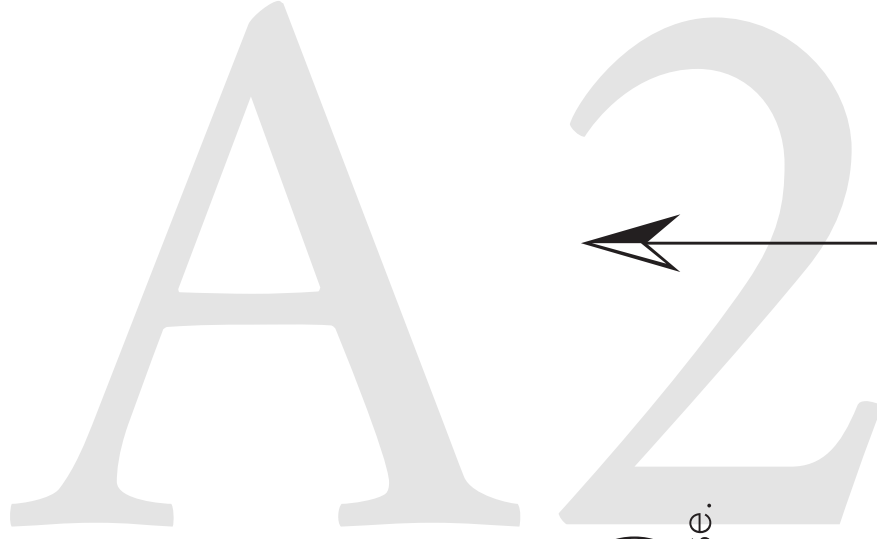
E - BACK

FABRIC: CUT 1

ON FOLD

LADIES SIZES 00 TO 32

1/2" seam allowances (SA's)  
included unless stated otherwise.



PLACE ON FOLD OF FABRIC

Size Line Key

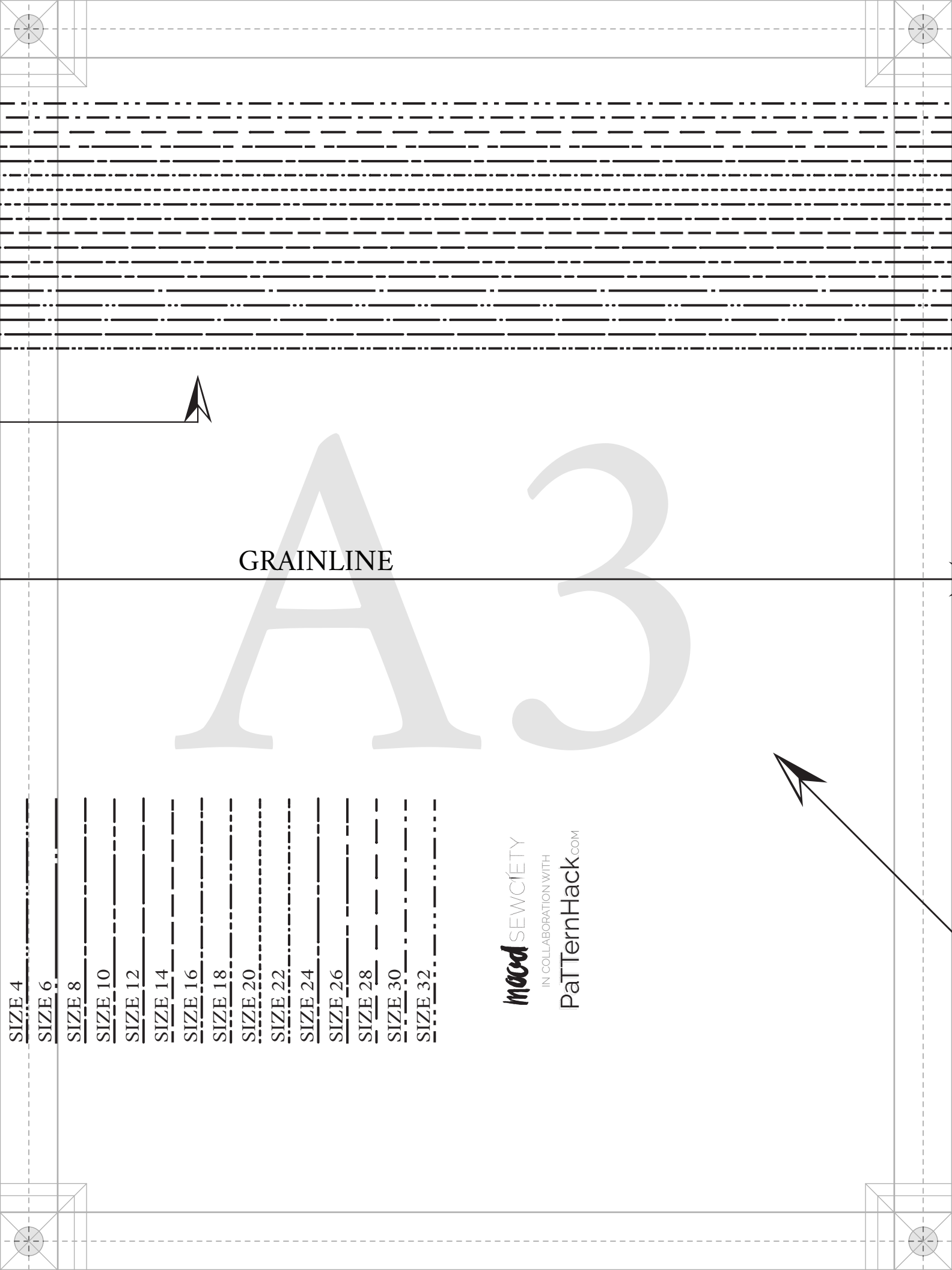
SIZE 00

SIZE 0

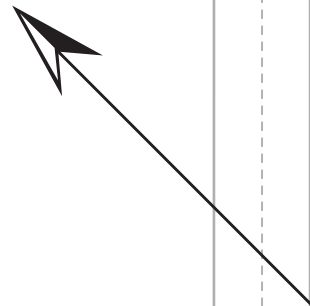
SIZE 2

SIZE 4

SIZE 6



GRAINLINE



SIZE 4

SIZE 6

SIZE 8

SIZE 10

SIZE 12

SIZE 14

SIZE 16

SIZE 18

SIZE 20

SIZE 22

SIZE 24

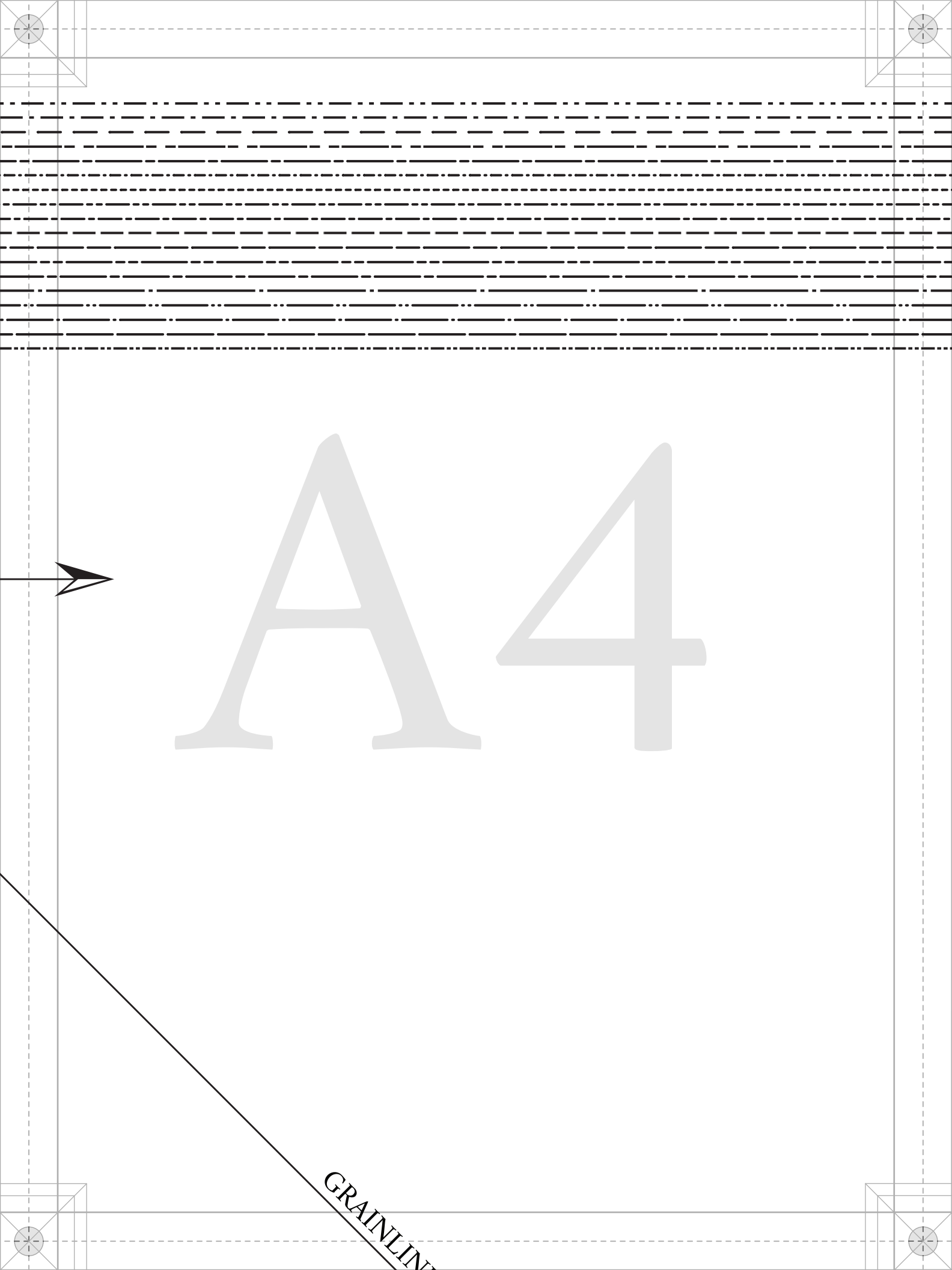
SIZE 26

SIZE 28

SIZE 30

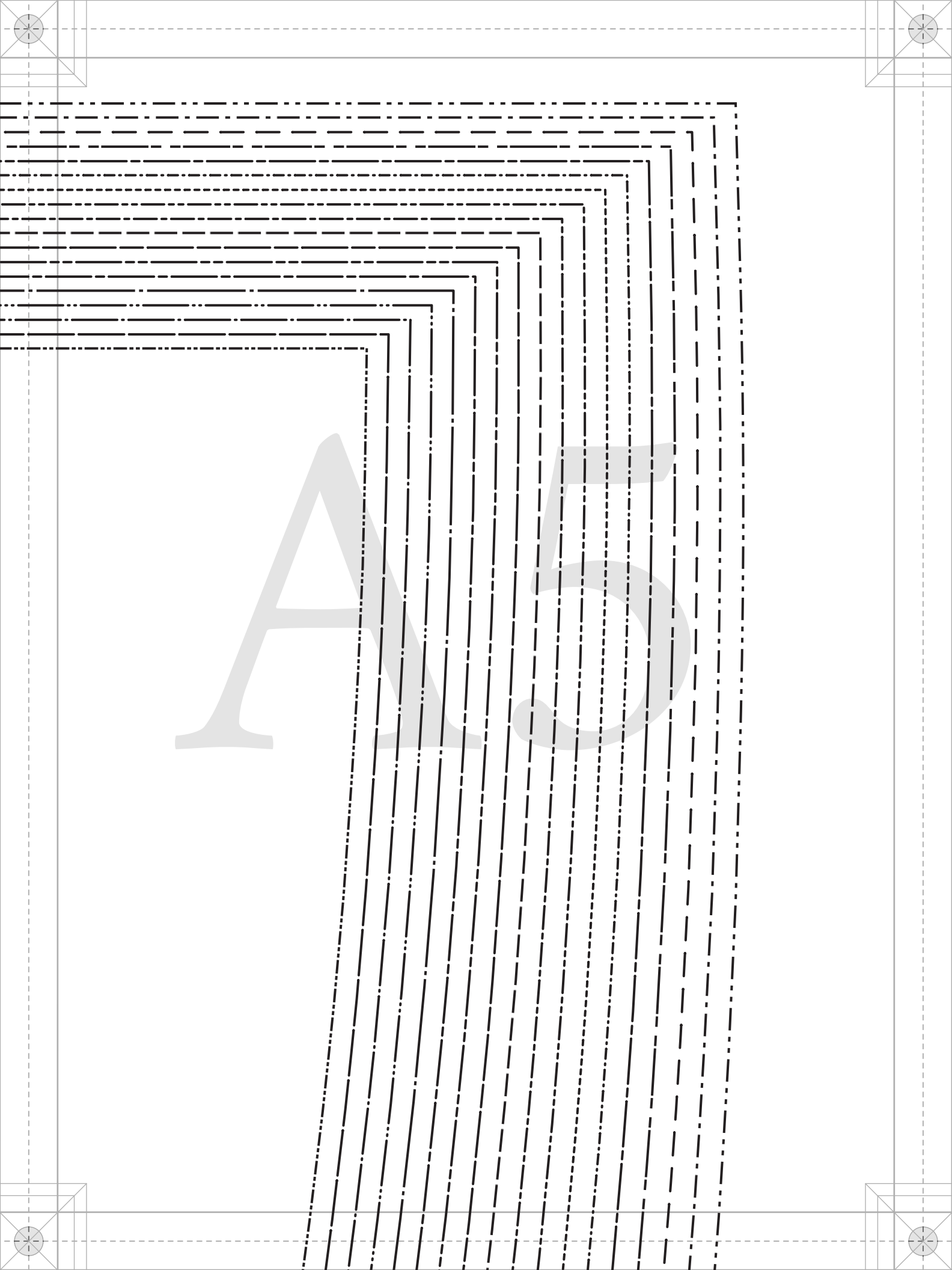
SIZE 32

**mad** SEWCIEITY  
IN COLLABORATION WITH  
**PaTernHack**.COM



A4

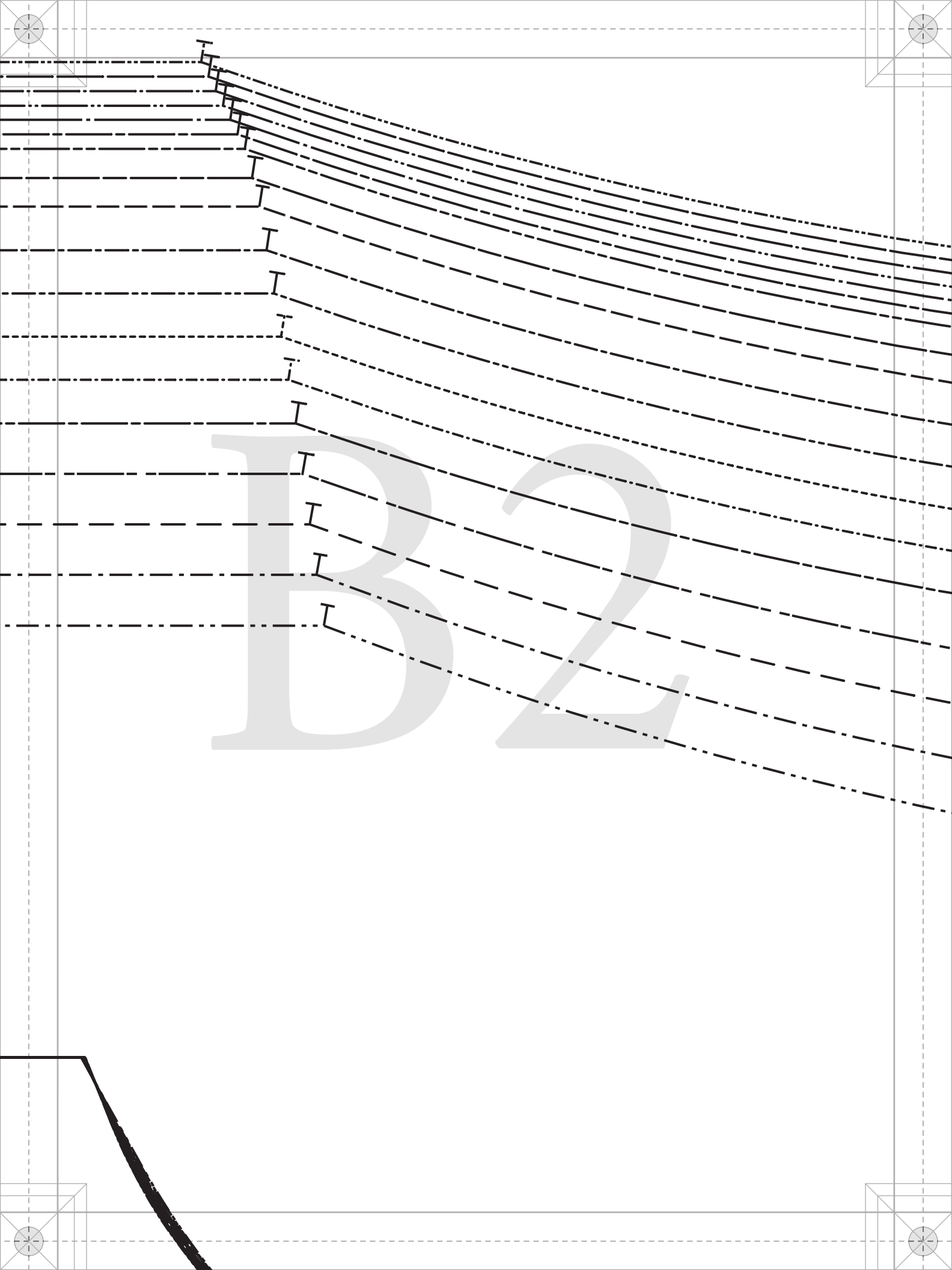
GRAINLINE

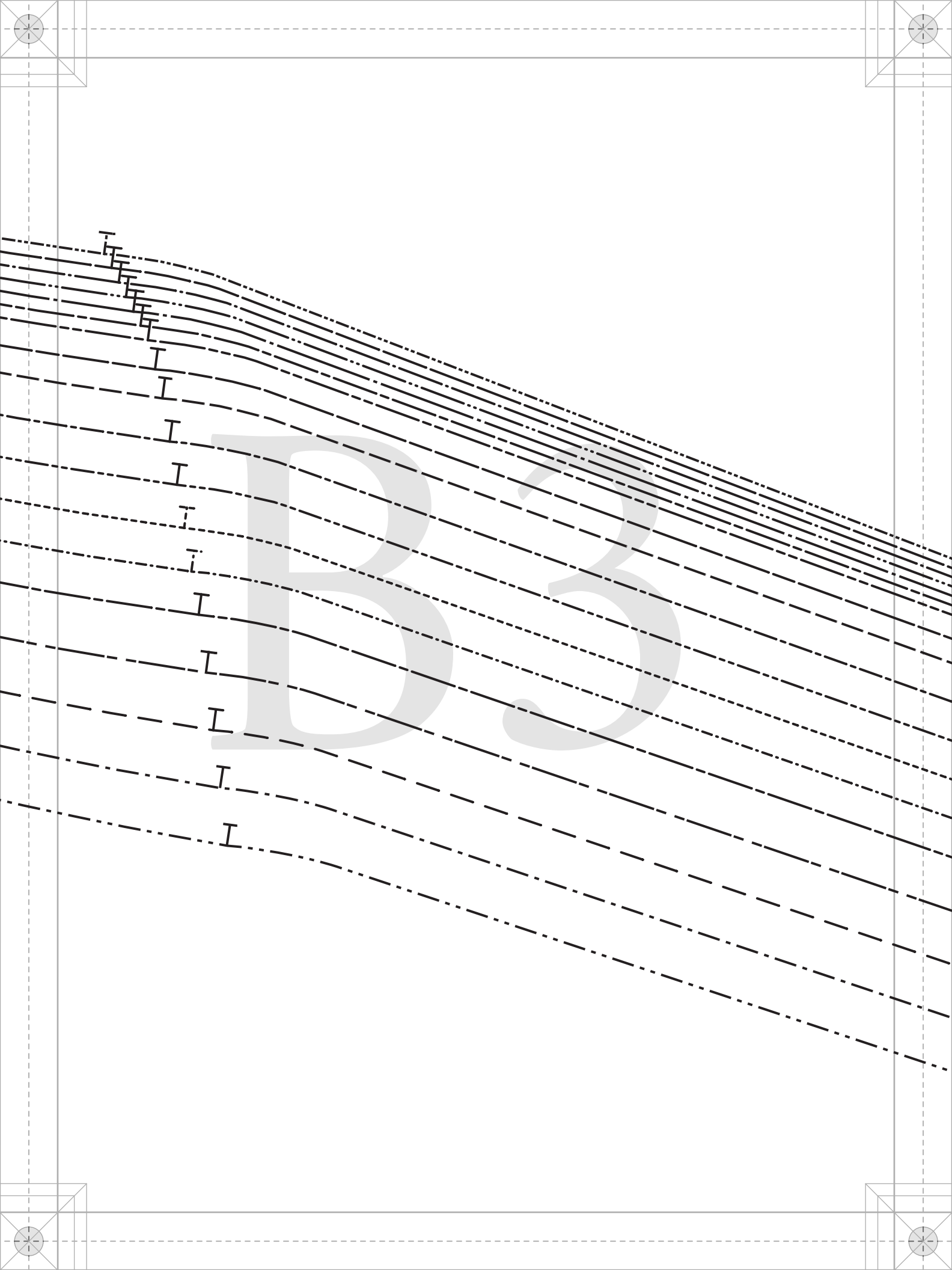


SIDE SEAM 1/2" SA

B1

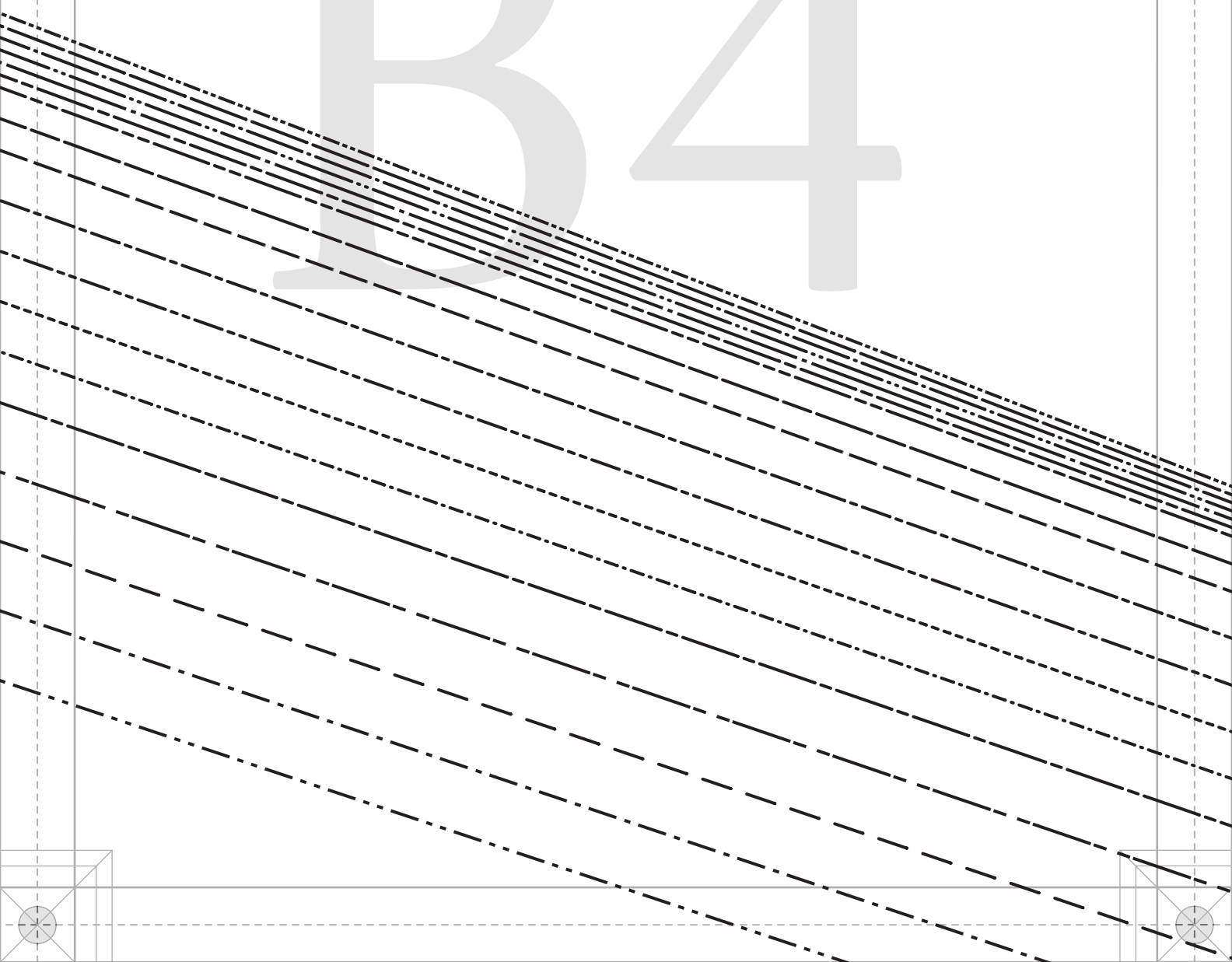


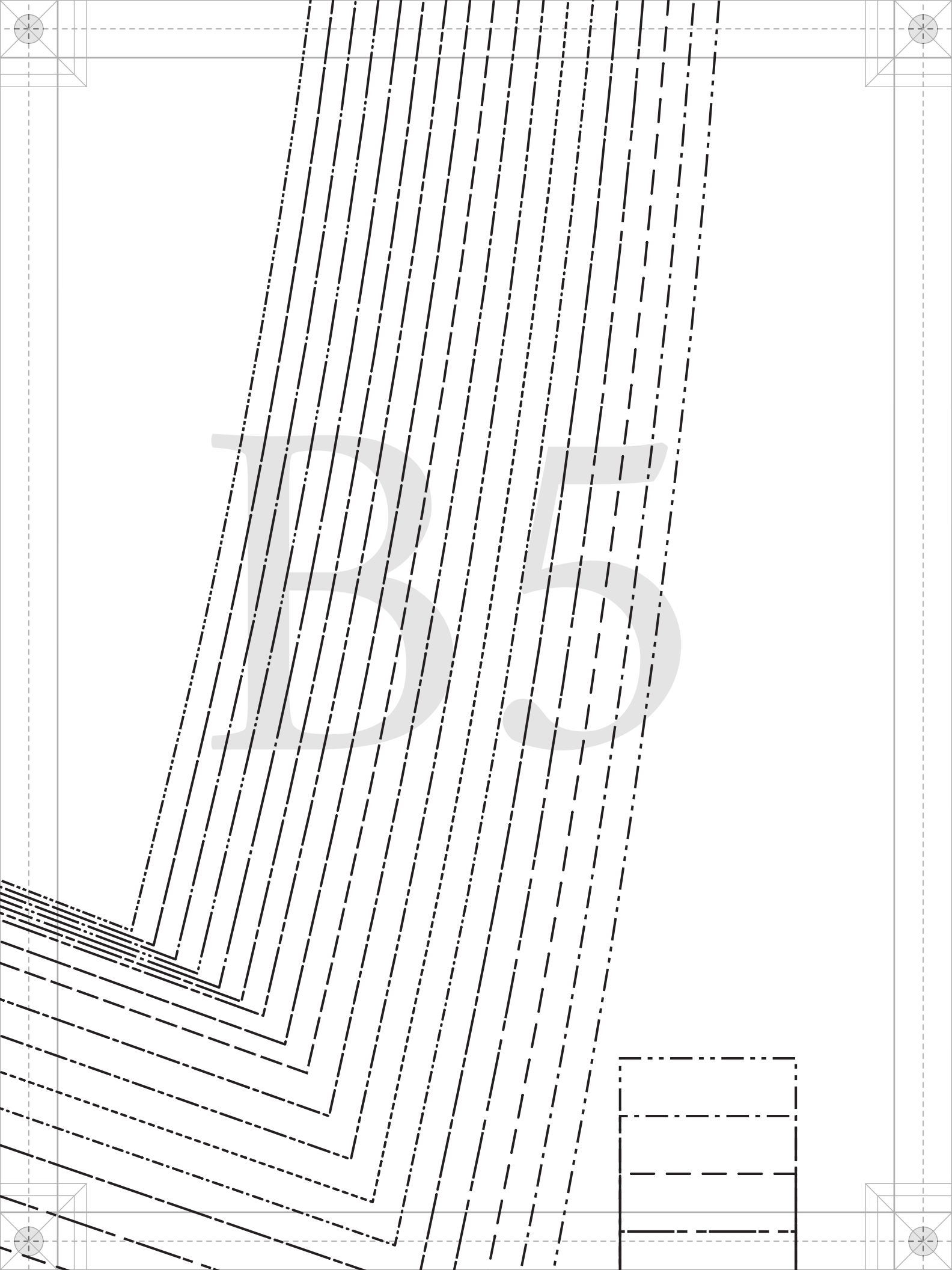




INLINE

B4





5 5


3/8" SA

01

PATT  
B  
*ma*  
DESIGNER  
MDF

#MoodHar

“The Har  
MDF

C - FR  
FABRIC  
ON F



PATTERNS

BY

*Wood*

DESIGNER FABRICS

MDF316

HanaPattern

"Hana Dress"

MDF316

FRONT

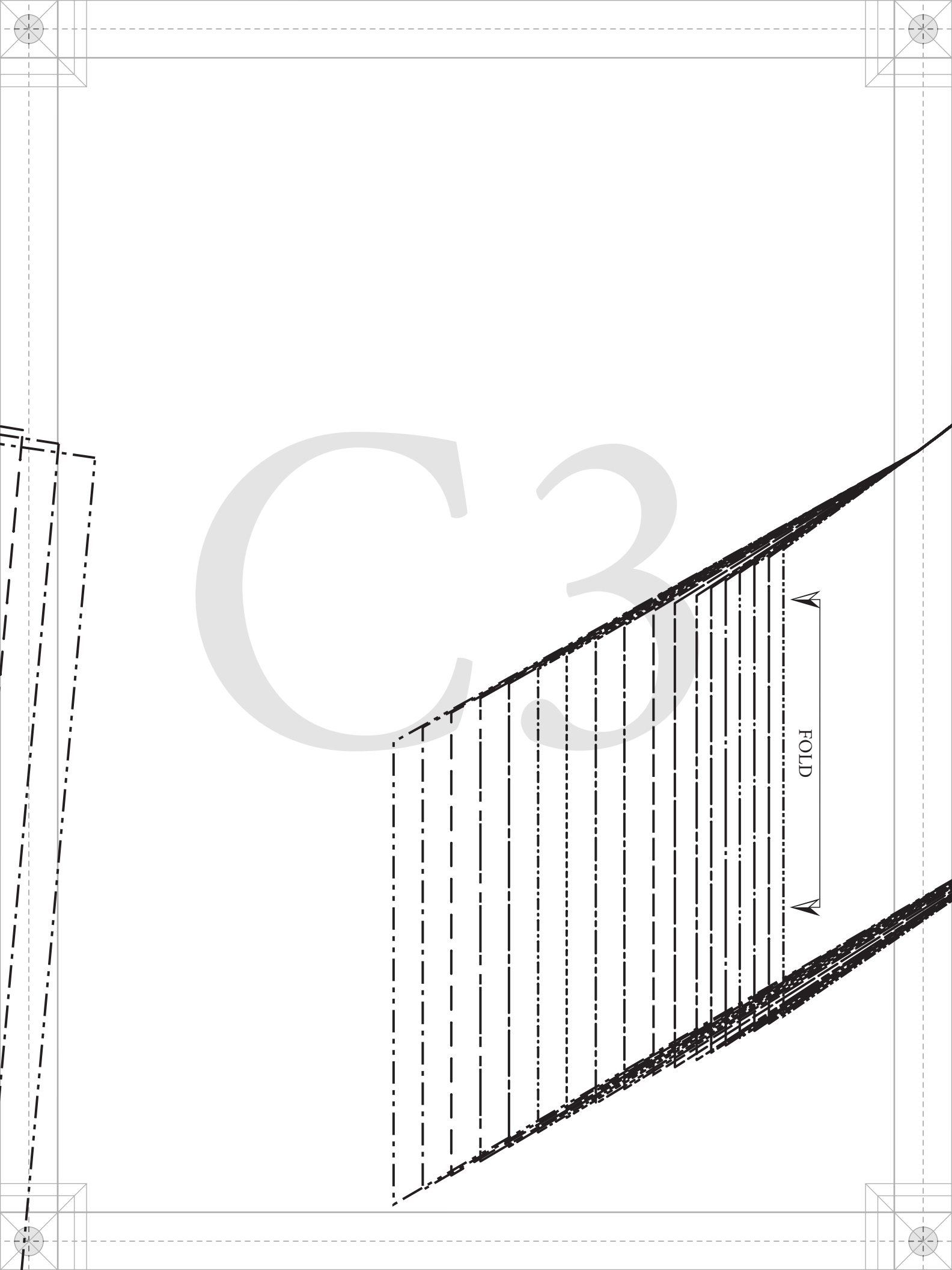
FABRIC: CUT 1

ON FOLD

$3/8"$  SA

$1/2"$  SA





C3

FOLD



#MoodHanaPattern

“The Hana Dress”  
MDF316

B - FRONT FACING  
FABRIC: CUT 1  
ON FOLD

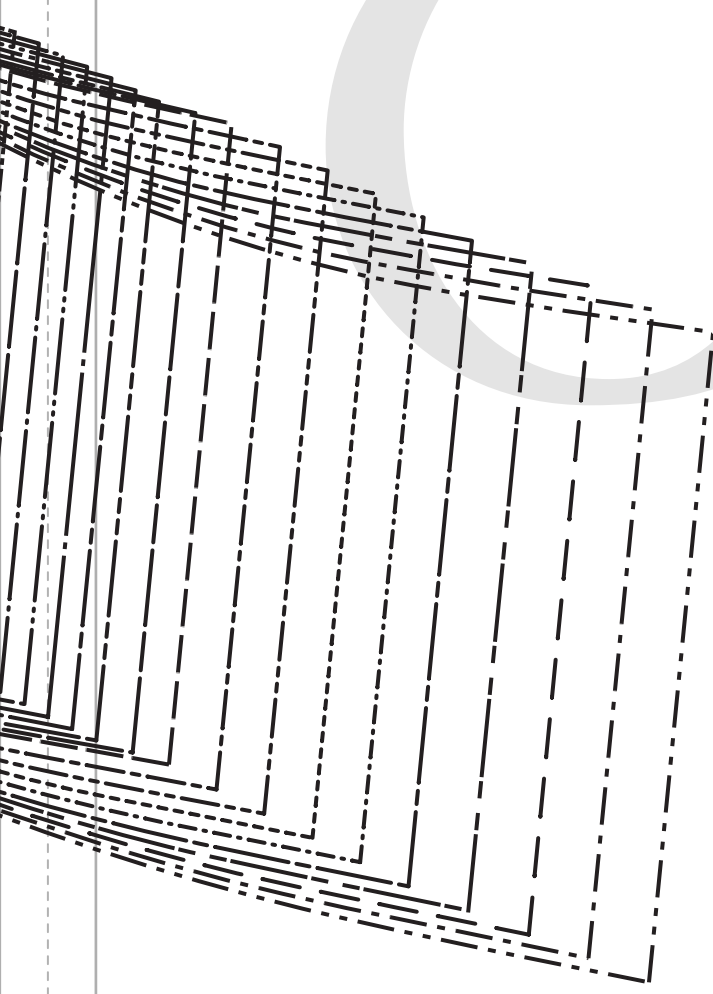
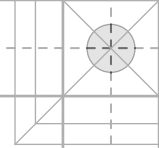
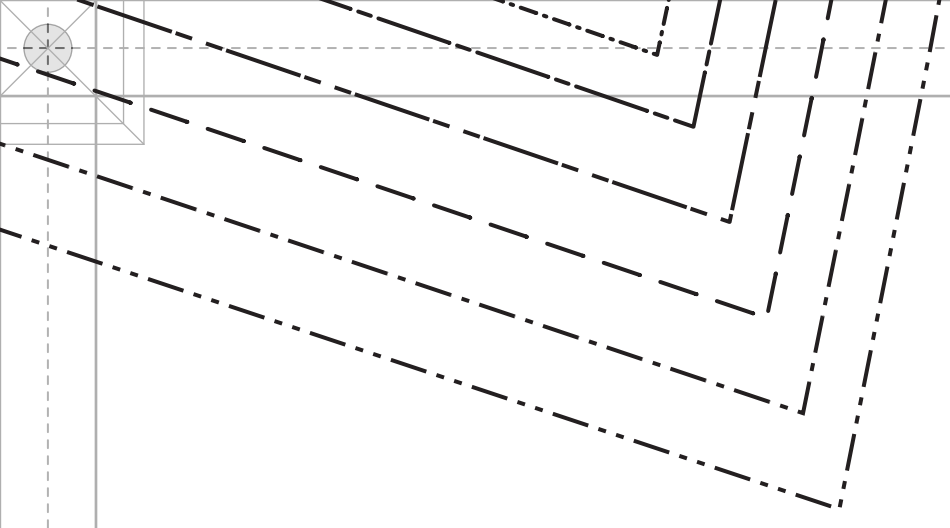


3/8" SA

3/8" SA

1/2" SA





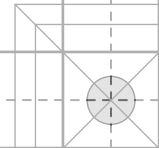
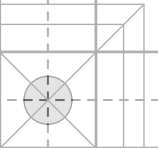
5

#MoodHanaPattern



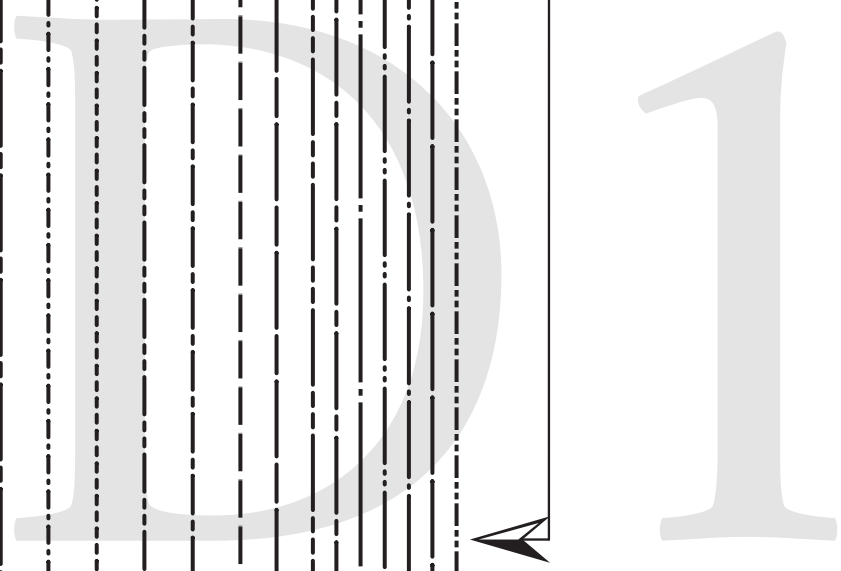
“The Hana Dress”  
MDF316

A - STRAP  
FABRIC: CUT 2



LADIES SIZE  
1/2" seam allowance  
included unless specified

PLACE ON FOLD OF FABRIC

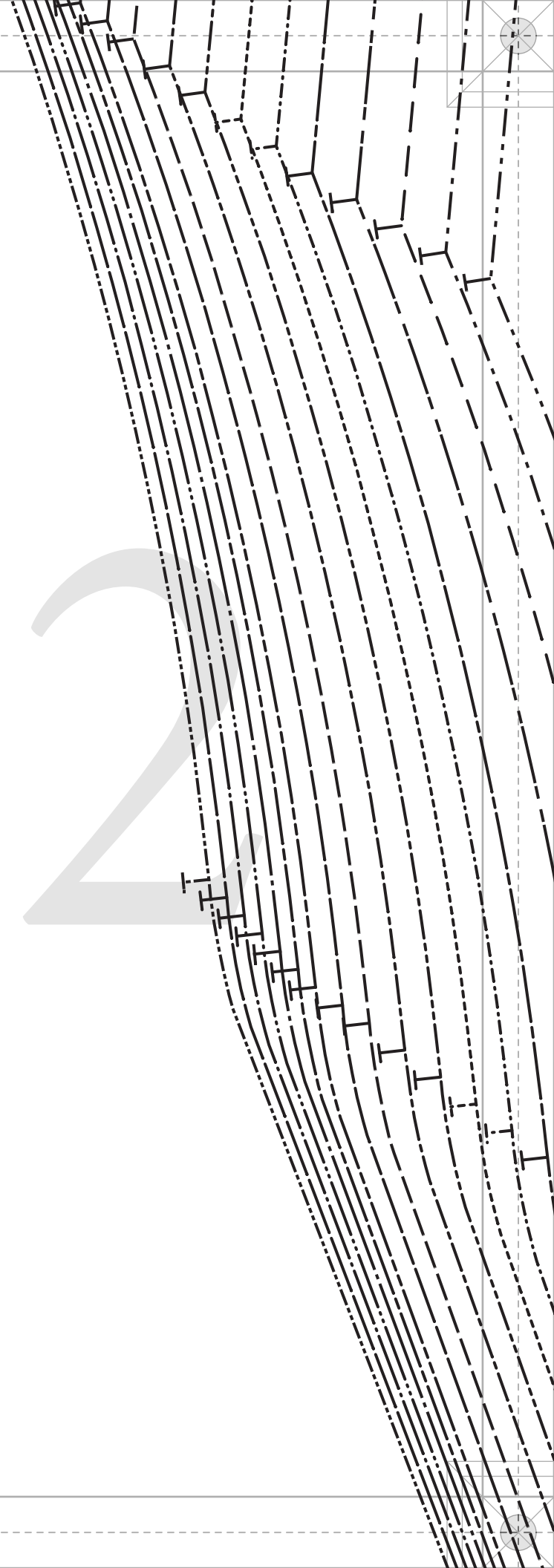
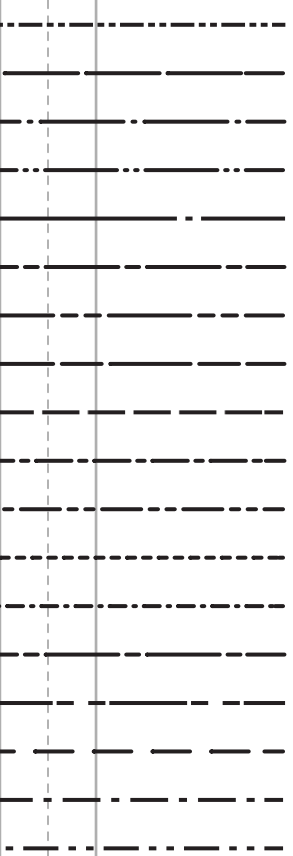


Size Line

- SIZE 00
- SIZE 0
- SIZE 2
- SIZE 4
- SIZE 6
- SIZE 8
- SIZE 10
- SIZE 12
- SIZE 14
- SIZE 16
- SIZE 18
- SIZE 20
- SIZE 22
- SIZE 24
- SIZE 26
- SIZE 28
- SIZE 30
- SIZE 32

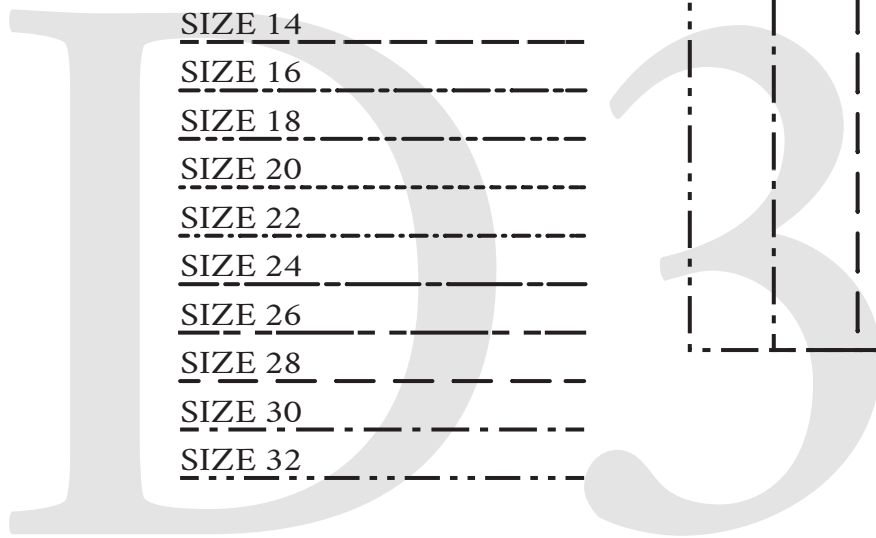
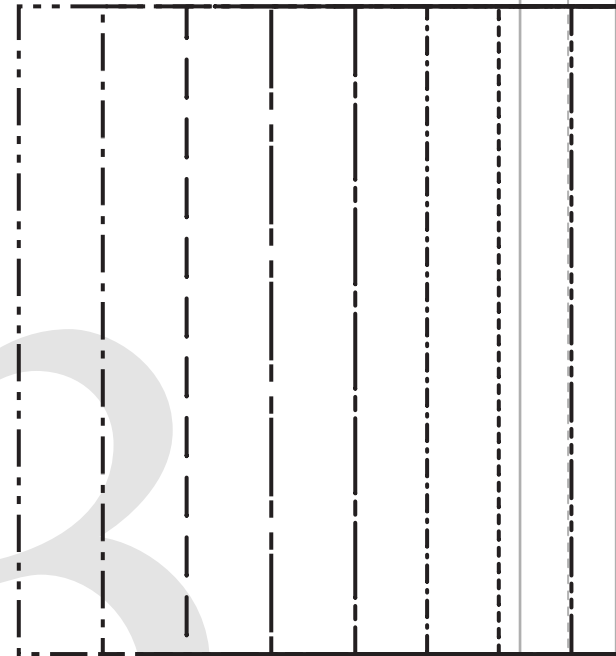
SIZES 00 TO 32  
in allowances (SA's)  
unless stated otherwise.

Size Line Key



## Size Line Key

SIZE 00	-----
SIZE 0	=====
SIZE 2	=====
SIZE 4	-----
SIZE 6	=====
SIZE 8	=====
SIZE 10	-----
SIZE 12	=====
SIZE 14	-----
SIZE 16	=====
SIZE 18	-----
SIZE 20	=====
SIZE 22	-----
SIZE 24	=====
SIZE 26	-----
SIZE 28	=====
SIZE 30	-----
SIZE 32	=====



**mad** SEWCİETY

IN COLLABORATION WITH

PaTternHack.com

3/8" SA

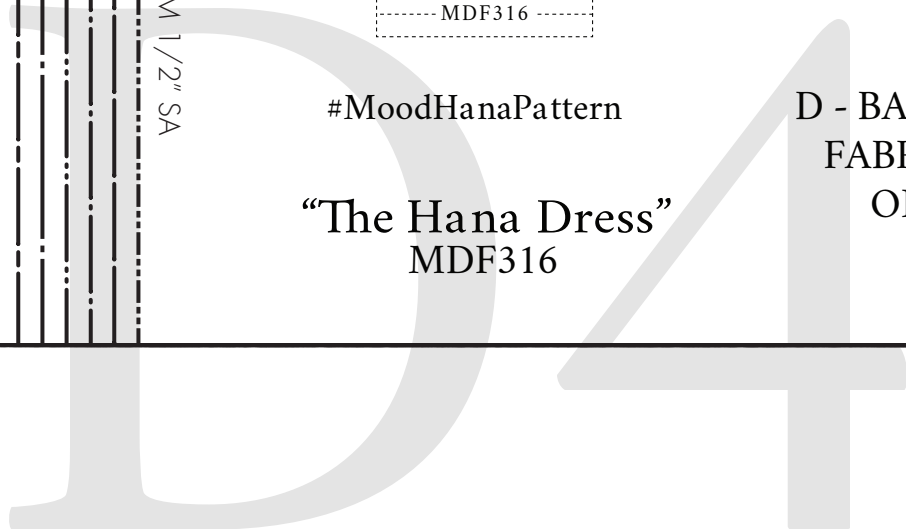
SIDE SEAM 1/2" SA



#MoodHanaPattern

“The Hana Dress”  
MDF316

D - BACK FACING  
FABRIC: CUT 1  
ON FOLD

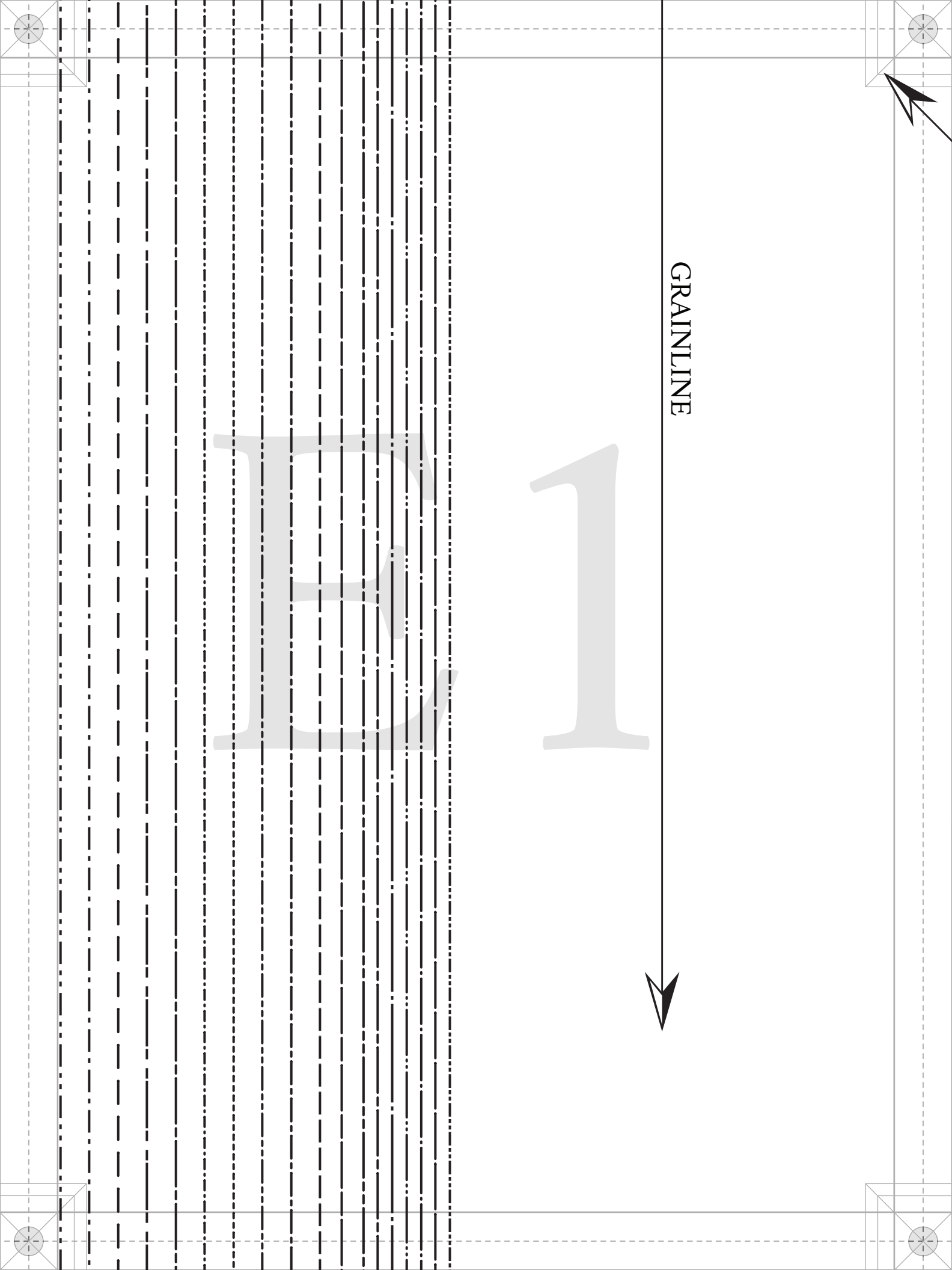


GRAINLINE

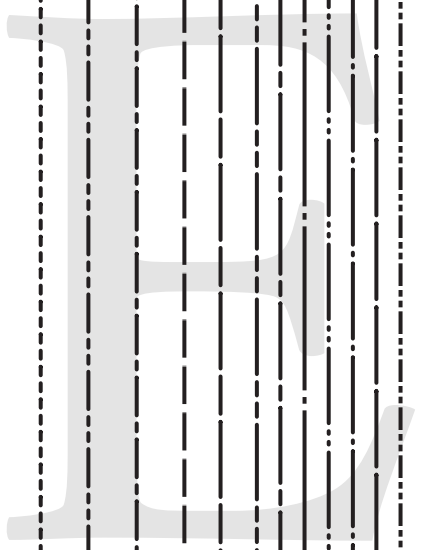
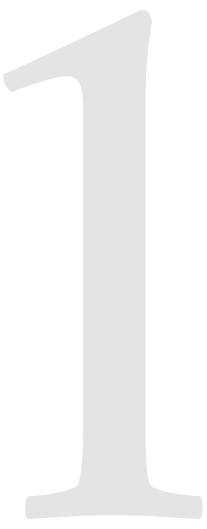
FOLD

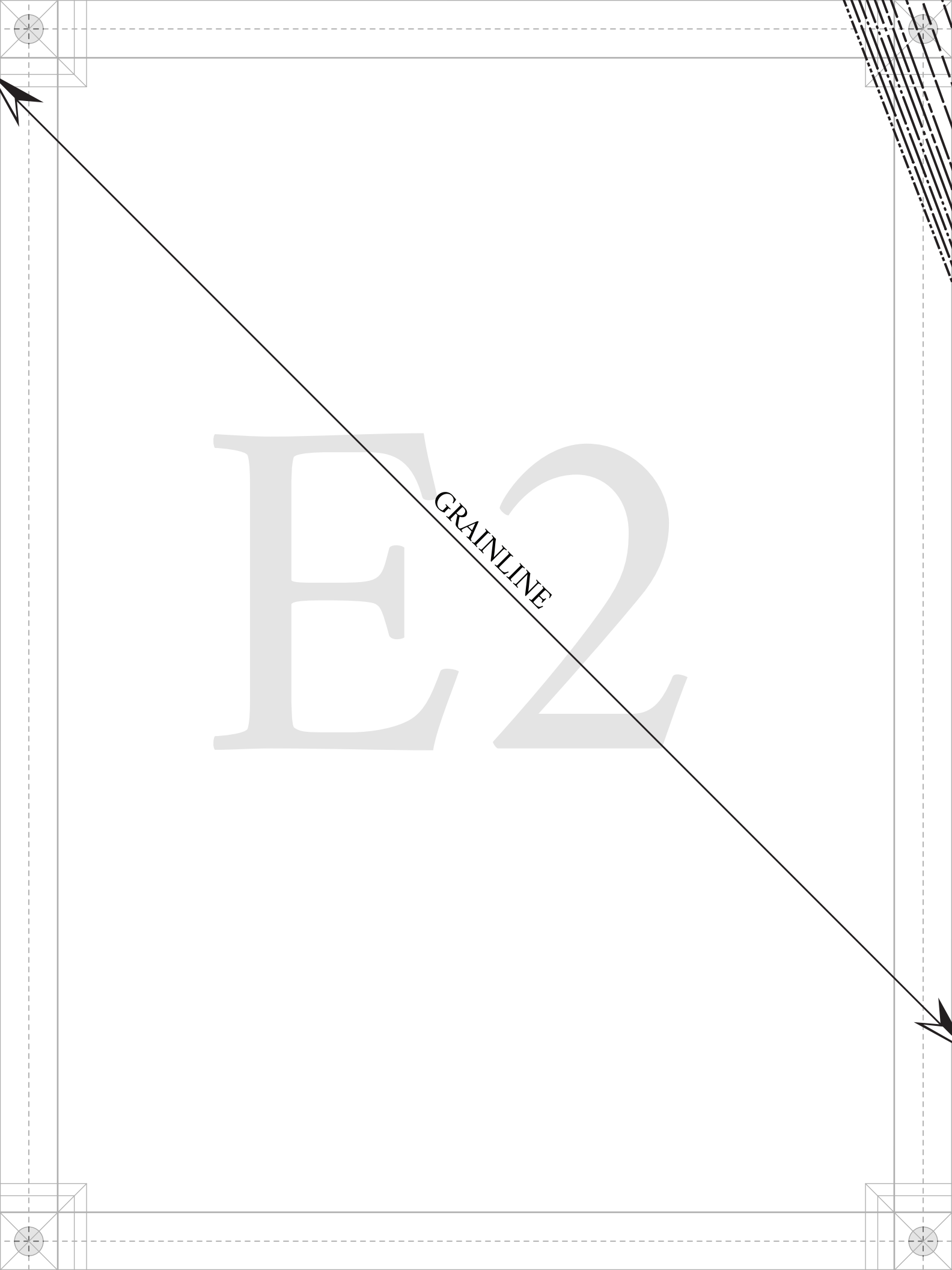
GRAINLINE

3/8" SAs FOR STRAP



GRAINLINE





GRAINLINE

E2



